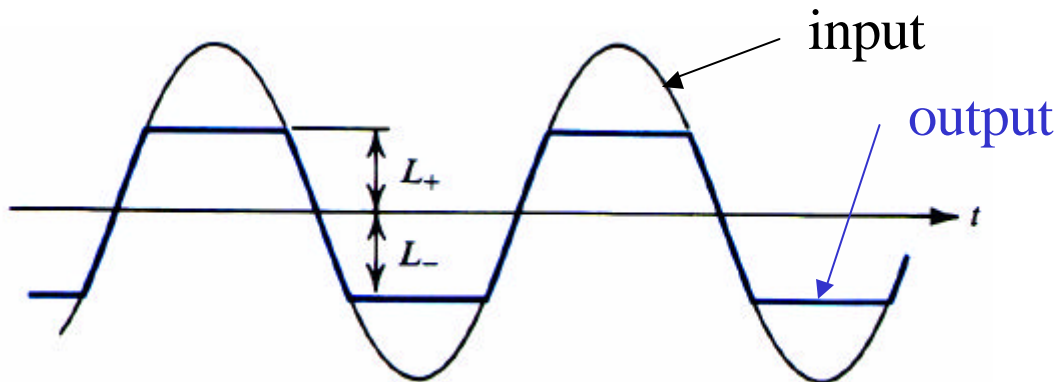
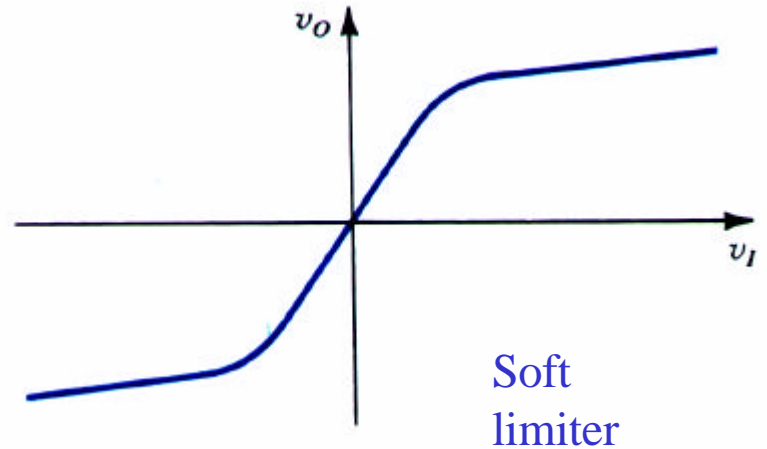
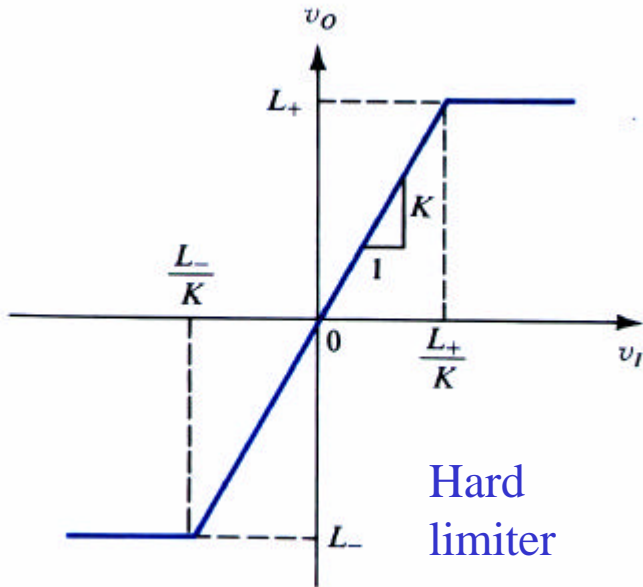


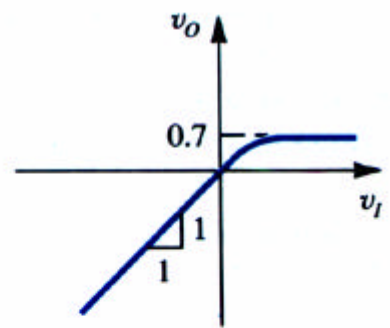
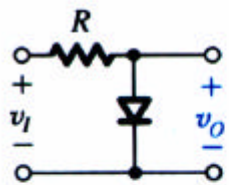
截波器與嵌位器

Clippers, Limiters 截波器，限制器

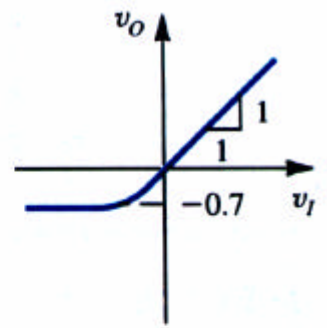
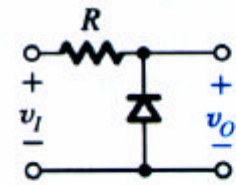
用在電路保護及訊號波形整理



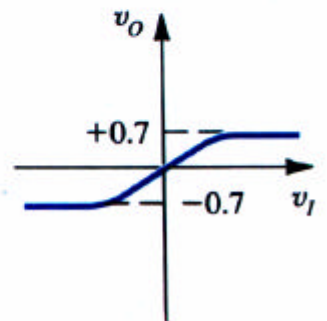
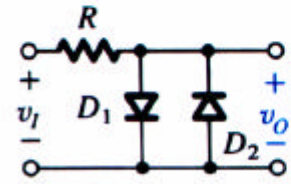
基本限制器電路



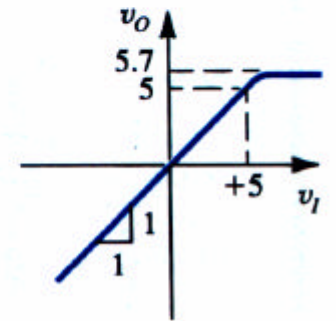
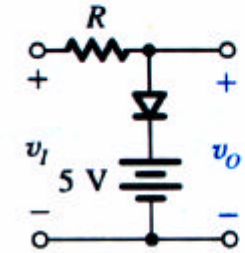
(a)



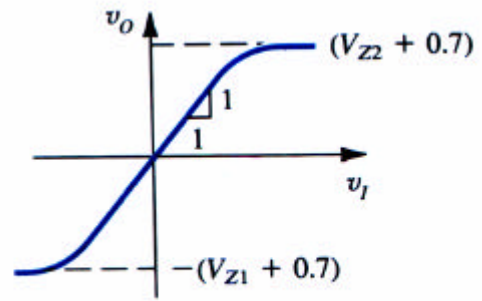
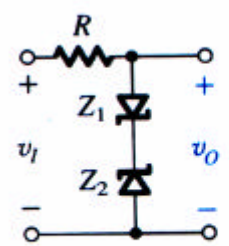
(b)



(c)



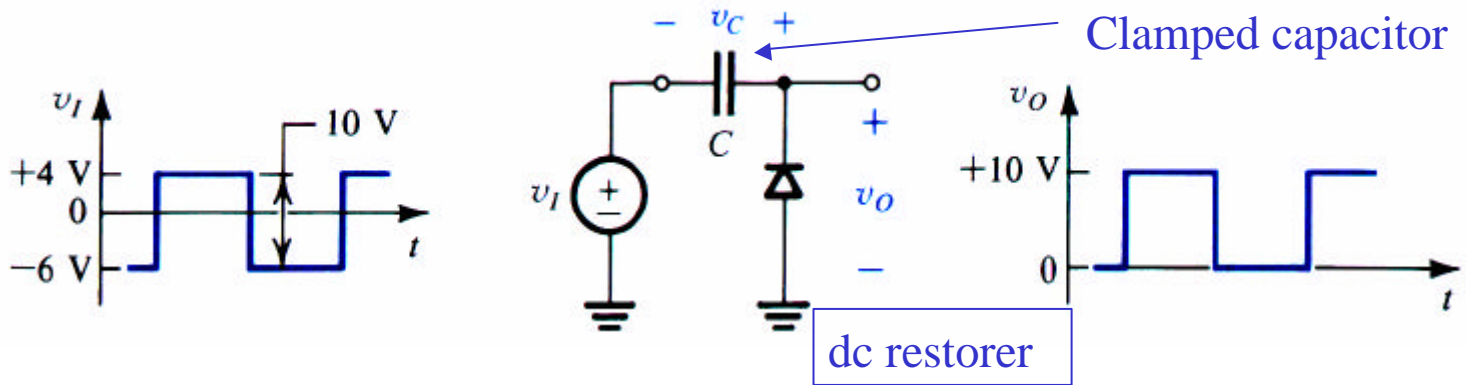
(d)



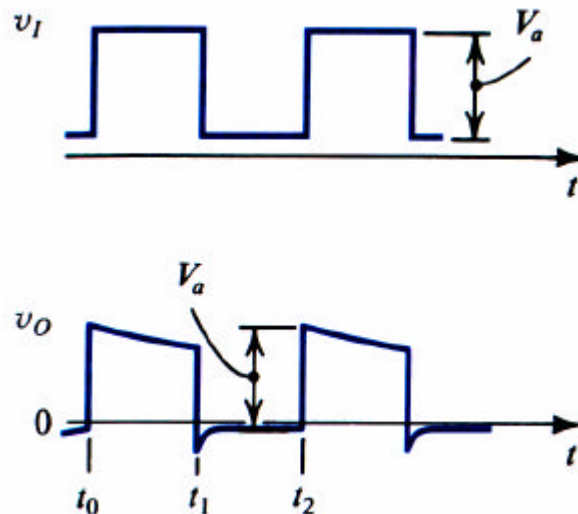
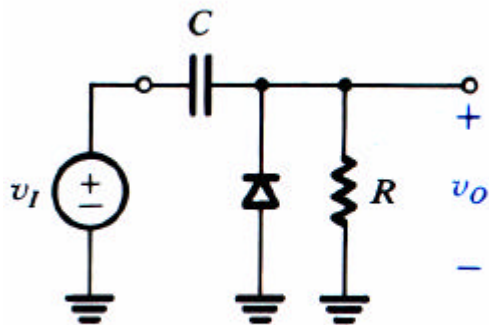
(e)

Clamping Circuits

利用二極體與電容接成一個讓電容保持某固定電壓的電路。



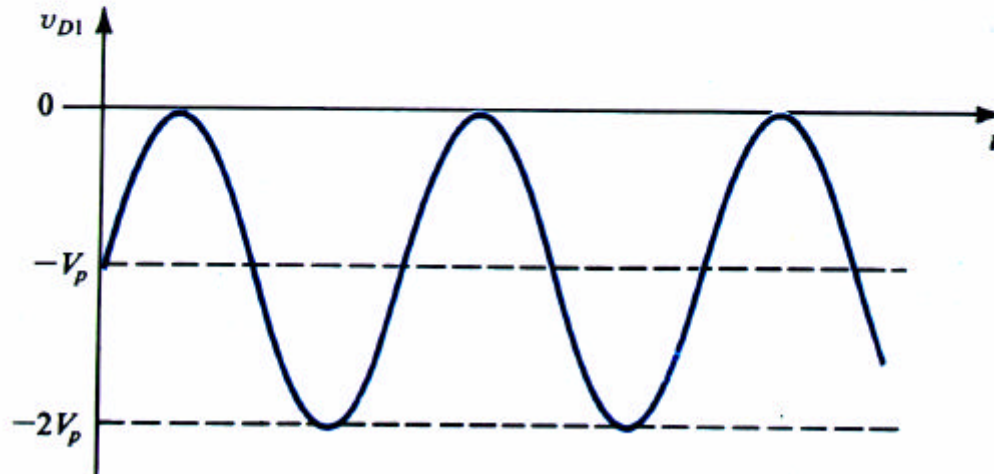
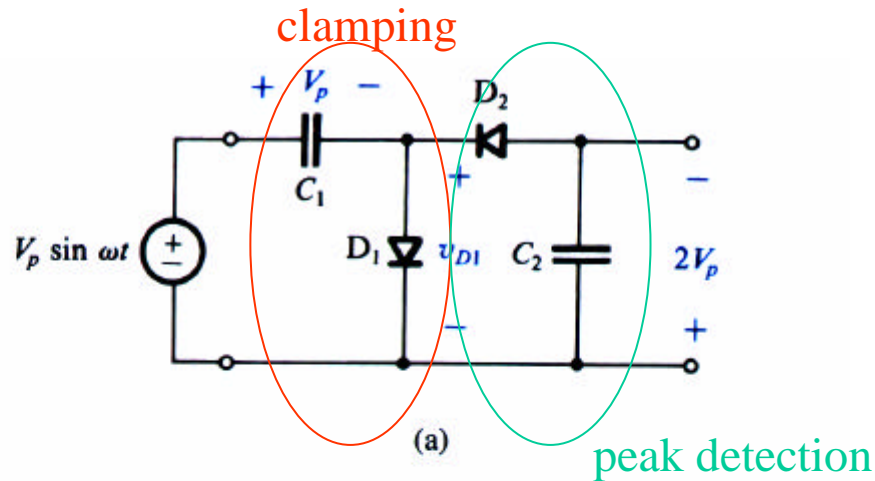
負載電流的影響



分析電路行為時要注意二極體的開關，以及電容的端電壓

可利用OP消除負載的影響

Voltage doubler



(b)

利用相同原理
可以設計出將
電壓升高 n 倍的
電路

想想看怎麼做？